



# SUPER MULTI NX



## INDOOR UNIT LINE UP

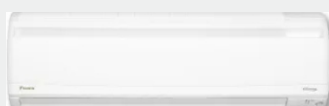
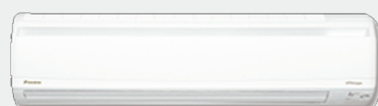
### WALL MOUNTED



European Design



Standard



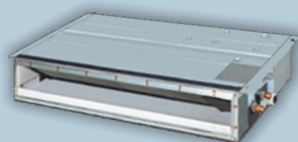
### FTKJ-N SERIES

2,5 kW | 3,5 kW | 5,0 kW

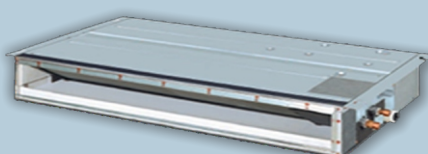
### CTKM-P SERIES

2,5 kW | 3,5 kW | 4,2 kW  
5,0 kW | 6,0 kW | 7,1 kW

### LOW STATIC PRESSURE DUCT



Standard



Slim

### CDKP - P SERIES

2,5 kW | 3,5 kW

### CDKM - P SERIES

2,5 kW | 3,5 kW  
5,0 kW | 6,0 kW

### MIDDLE STATIC PRESSURE DUCT



### FMA - R SERIES

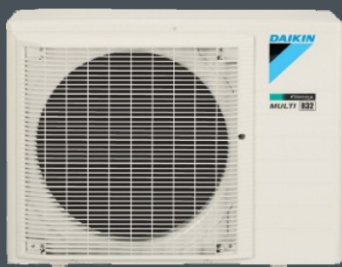
5,0 kW | 6,0 kW | 7,1 kW

### CEILING MOUNTED CASSETTE



READY ON SEPTEMBER 2019

## OUTDOOR LINE UP



6,5 kW (Connectable up to 4 Indoor Units)  
7,6 kW (Connectable up to 4 Indoor Units)



9,2 kW (Connectable up to 4 Indoor Units)  
10,5 kW (Connectable up to 5 Indoor Units)